



Komar Auger-Pak™

Quality Made
in the USA



Industrial Pre-Crushing Compactor for Corrugated Material and General Waste



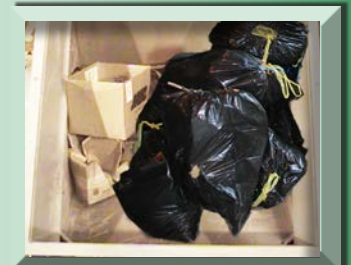
Model: EM-15-GL With Optional Plug-in Hopper

Komar's EM-15-GL Auger-Pak™ is a general purpose pre-crusher with an optional plug-in enclosure which provides security and ease of loading from inside of the facility. The lower cost unit replaces the need for open containers and hydraulic ram compactors for many applications. It maximizes density by up to 5 times, crushing and compacting directly into a standard 40 cubic yard receiving container. Its 3 cubic yard charge box can handle bag trash, corrugated boxes, plastic products, small wood boxes, standard pallets and small furniture. The powerful all electric drive eliminates hydraulic oil spills, inherent in other compactors, creating a safer work environment for employees.

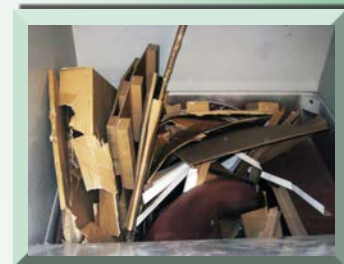
Model: EM-15-GL 3 Cubic Yard



Corrugated
Boxes



Bag & Box
Waste



General
Mixed Waste



Standard Roll-
off Compaction
Container with
Processed
Corrugated

Load weights are based on actual customer usage; however, results may vary depending on materials, moisture, loading methods or scheduled pick-ups.

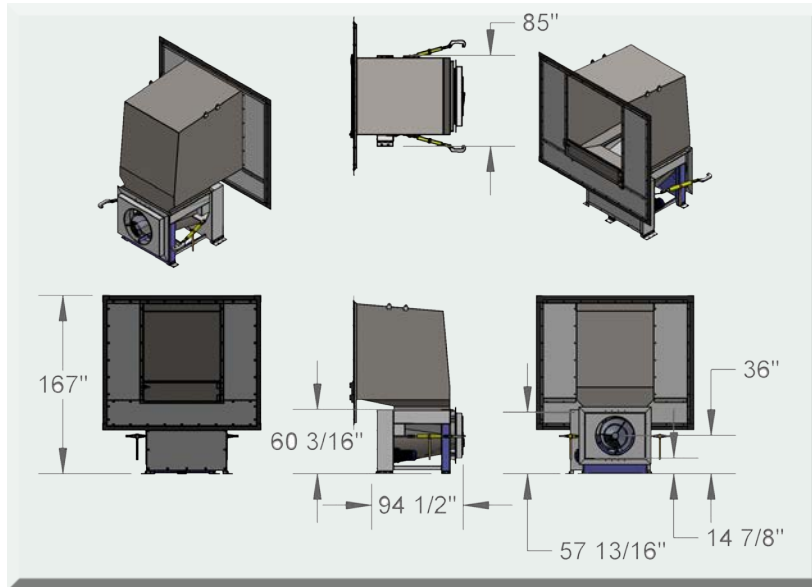
Since 1977



Auger-Pak

ideal for commercial and small industrial applications

Model: EM-15-GL



Technical Specifications	
Machine Size	EM-15-GL
Unit Charge Volume (Mfg. rating)	3 cubic yard
Enclosure Capacity (as shown optional)	10 cubic yard
Auger Charge Opening (L x W)	60" x 59-1/4"
Optional Hopper(L x W x H) (as shown)	93-3/4" x 147-3/4" x 123"
Overall Dimensions (L x W x H)	105" x 147-3/4" x 167"
Machine Base Weight	12,500 lbs.
Performance	
Auger RPM	8
Thrust (lbs)	76,900 lbs.
Flight Compaction Force	380 psi
Horsepower	15 HP.
Torque (ft/lbs) $Torque = (HP \times 5250)/RPM$	9,844 ft/lbs.
Construction	
Drive Chamber	Full Box Construction
Shaft (Solid Steel Alloy)	6"
Chain (Ultimate Strength Rating)	78,000 lbs
Paint Pre-treatment	Blasting & Chemical Cleaning
Paint Epoxy Base Primer & Polyurethane Coat	Nickel Standard, Other Colors Available
Roller Bearings	Self Lubricating
Electrical	
Electrical (Voltage 3 phase, 60 Hz)	240/480
Amperage	42/21
Control Panel	UL Type 4
Controls	PLC
Auto Reverse	Standard
Bin Full Indicator Light	Standard
Key Lock Start/Reverse Switch	Standard
Mushroom Stop Switch	Standard
Adjustable Run Time	Standard
Komar's Auger-Pak meets all ANSI and OSHA standards	
Komar reserves all rights to change the specifications for product improvement	



Heavy Duty Compression Flight maximize flight longevity.

Bearing Protection Housing is integrated with the Shaft and internal seals.



Control Console
UL Type 4
Wall or Machine Mount

Proprietary Compression Auger Features:

- **Solid Alloy Steel Shaft**
Auger Length 90¾"
Working area 75½"
Auger Weight 1,770 lbs.
- **Proprietary Cast Steel Flights**
Shaped with a forward leaning contact surface, 2:1 base to outer periphery and a raised shearing surface on the flights leading edge.
Compression flight has a 3" base flight thickness tapering to 2", outer periphery with a raised shear surface on the flight leading edge.



Optional: Octagonal Receiving Containers

- Standard Rectangle Opening or
- Close Fit Reduced Spill Unit with Swing Door

Patented Catilever Auger Support Assembly

This Product Covered by One of the

Following Patents:

US 9,132,968 B2

US 9,346,624 B2

Other Pat. Pending

Quality Made in the USA



Komar Industries
Phone (614) 836.2366
FAX (614) 836.9870
4425 Marketing Place
Groveport, OH 43125
info@komarindustries.com
www.komarindustries.com