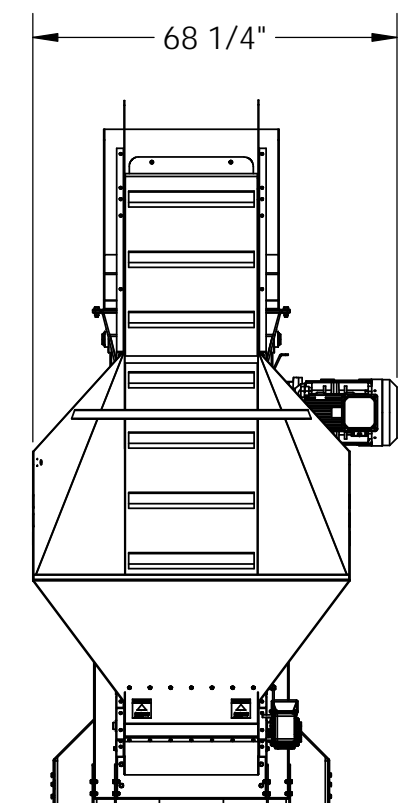
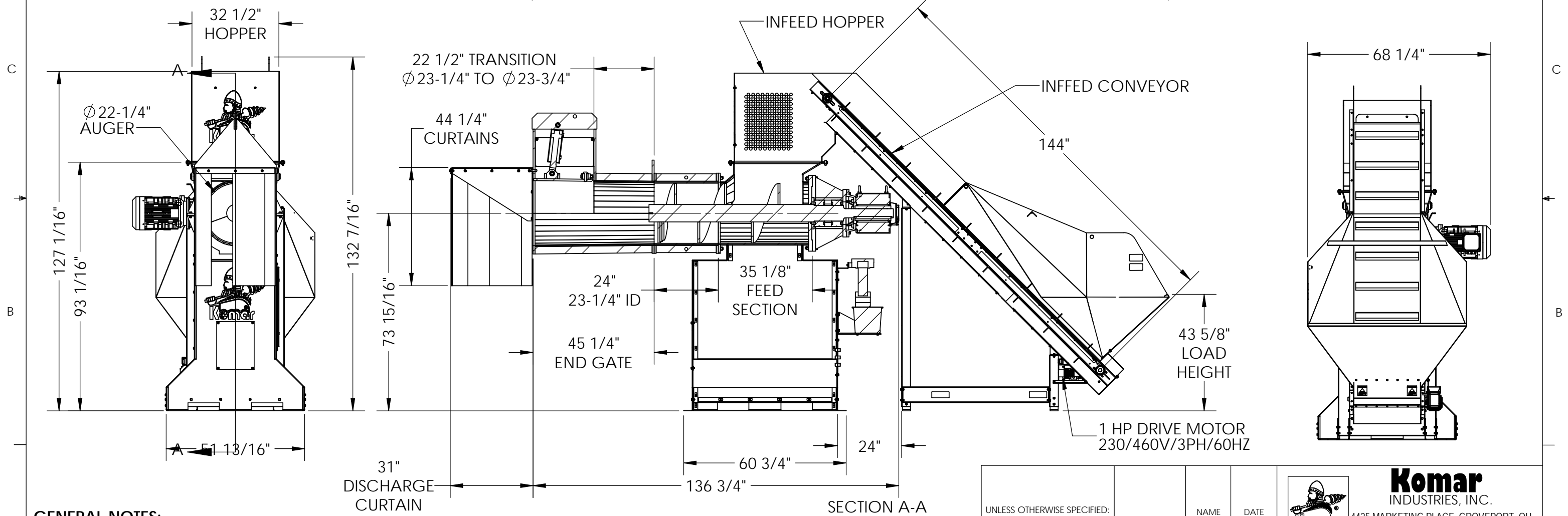


REVISIONS			
REV.	DESCRIPTION	DATE	APPROVED



GENERAL NOTES:

- POWER REQUIREMENTS: 480V, 3 PHASE, 50 AMP SERVICE REQUIRED TO HANDLE THE IN-RUSH CURRENT OF A 20 HP MOTOR DURING START-UP
- CONCRETE PAD: 6" - 8" MINIMUM CONCRETE PAD THICKNESS REQUIRED FOR MACHINE AND CONVEYOR. CONCRETE PAD TO EXTEND 12" AROUND FOOTPRINT OF MACHINE AND CONVEYOR.

PATENTS
 THE INFORMATION PORTRAYED ON THIS DRAWING MAY BE COVERED BY ANY ONE OF, OR ALL OF THE FOLLOWING PATENTS.
 UNITED STATES
 4253615 4915305 4938426
 4951884 4993649 5038422
 5108040 5217173 5308003
 CANADA AUSTRALIA DENMARK
 1129388 616005 624700 0962/90
 624500 624502
 624500
 EUROPEAN PATENT OFFICE
 0339993
 OTHER U.S. AND FOREIGN
 PATENTS ISSUED AND PENDING

PROPRIETARY AND CONFIDENTIAL
 THIS DRAWING CONTAINS CONFIDENTIAL INFORMATION AND IS THE EXCLUSIVE PROPERTY OF KOMAR INDUSTRIES, INC. NEITHER THE DOCUMENT NOR ITS CONTENTS ARE TO BE USED, REPRODUCED, OR DISCLOSED IN WHOLE OR IN PART, WITHOUT THE WRITTEN PERMISSION OF KOMAR INDUSTRIES, INC.
 DO NOT SCALE DRAWING

UNLESS OTHERWISE SPECIFIED:	NAME	DATE
DIMENSIONS ARE IN INCHES	MRL	8/26/2019
TOLERANCES		
FRACTIONAL: ± 1/16		
ANGULAR: MACH ± 1°		
HOLES: +.003 / -.002		
TWO PLACE DECIMAL: ±.01		
THREE PLACE DECIMAL: ±.005		
INTERPRET GEOMETRIC TOLERANCING PER:		
MATERIAL		
FINISH		
STOCK SIZE		

Komar
 INDUSTRIES, INC.
 4425 MARKETING PLACE, GROVEPORT, OH 43125 U.S.A. (614) 836-2366

TITLE: EPC-20 W/ STANDARD DISCHARGE SECTION NEXGEN - McCOY RECYCLING

Configuration Part Num: WITH LABELS

SIZE	File / DWG. NO.	REV
B	GA4129	

SCALE: 1:36 WEIGHT: 7121 SHEET 1 OF 1