

HCP Series

Sizes 48, 51, 53'

Cuts Your Costs:

- Powered by truck mounted 130 gallon hydraulic tank and 30gpm truck PTO kit or optional 130 gallon on board tank
- 10-14' wide lid fully integrates with loaders, conveyors or Transtor storage units
- Radio remote control of all functions makes operation quick and easy
- Optional Auto-Pack allows the owner to determine the exact level of compression and number of compaction cycles on the product with 2 programmable settings
- Optional hydraulic tailgate reduces off-loading time
- Optional remote cell modem allows quick factory diagnostics and troubleshooting

MAJOR FEATURES

Hardox Body Construction
Full Eject Design
10.5" Diameter 6 Section Ram
Top Loading Roof -10-14' Long
Hydraulic Actuated Lid Locks
Dual Release Compaction Tailgate
Handheld Radio Controller
Fully Automatic Packing Sequence

DIMENSIONS

Length - 48', 51' and 53 Sizes
Width— Standard 102"
Height—13' 3" Overall
Usable Capacity—85 to 110 yds3



NEXGEN MUNICIPAL
turning vision into value™

NexGen HCP Trailer System

TRANSPORTATION EFFICIENCY MADE EASY

Compacting and shipping waste and recycling commodities shouldn't be so hard. NexGen HCP Trailers combine the ability to compact and fully eject in a single trailer. Materials can be top loaded using Transtor units, loaders or conveyor systems to eliminate the need for loaders, manpower and associated costs. The large multi-section ram and PLC controlled smart packing system pack the trailer to maximum payloads and provide easy off-loading in less than 5 minutes. HCP trailers make easy work of handling bulky goods and OCC that walking floor trailers struggle to off-load. Wet material is easily accommodated by the fully welded floor, walls and sealed tailgate. Depending upon local GVWR limits, HCP series trailers can provide storage and transport of 18 to 28 tonnes.

DESIGN

Heavy duty all steel, abrasion resistant construction in walls, floor, roof and ram.

Tandem or tridem axles, optional steerable lift axles

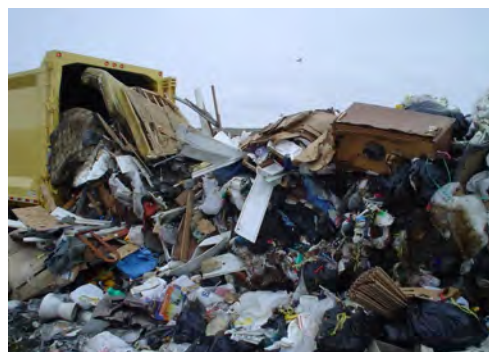
Integrates and powers Transtor storage and loading system in remote areas, using auxiliary hydraulics

Single and double roof designs to optimize usable packing area to maximize payloads.



SIMPLE OPERATION

- Trailer power is provided by connecting the trailer to the tractor PTO hydraulic pump system
- Optional local hydraulic power packages are available in 220V single phase and 575V three phase
- Radio remote controls all trailer functions
- Automatic packing system senses system pressure and blade location, allows programming of the compaction system to maximize payloads
- Full eject ram system automatically pushes fully packed trailer out in less than 5 minutes



HCP Series



Success Stories:

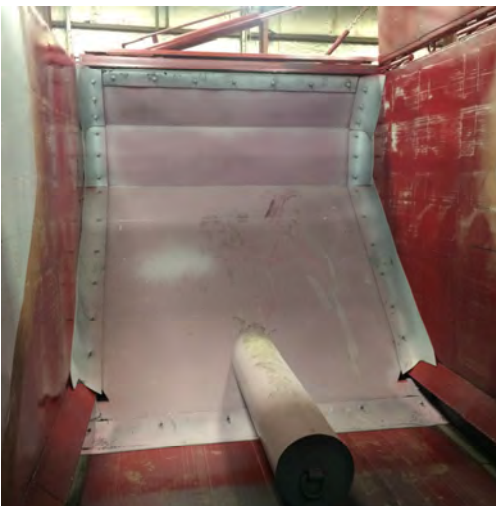
- PTO power provided by tractor minimizes fuel consumption and simplifies operation
- PTO design maximizes packing chamber capacity
- Flexibility assists smaller communities to build remote transfer stations where electrical power is not available, when heavy payloads are required
- Standard unit includes one touch packing, programmable multi-pack allows operators to adjust to changing materials over time, to maximize payloads and minimize transport costs
- Operator remote control system provides single point control of all trailer functions as well as Transtor tipping operations, if required

REMOTE CONTROL OPERATION

- Handheld Radio Control with 100' Work Radius
- Emergency Stop Button
- Pistol Grip with Trigger Control
- Fully Epoxy Potted With Rubber Booted Switches
- Optional Engine Start/Stop
- Lid Lock/Unlock
- Ram Extend/Retract
- Transtor Raise/Lower
- Autopack High/Low Packing
- Optional Tailgate Open/Close



RAM COMPACTION



- Oversized Compaction Ram with Stinger
- Optional Stinger Cover
- Aggressive Packing Nose Focuses Pressure to Break Down Stubborn Objects
- Ram Face AR400 Abrasion Resistant Plate
- Ram Fully Supported in Bottom Rail Track System
- Rebuildable Ram Track Guides
- Tight Tolerance to Sidewalls
- Sidewall, Top and Sidewall Wipers
- Ram Shaped to Maximize Packing Pressure and Easily Eject Loads
- 6 Stage Ram Cylinder With Return ByPass Valve

KEY SPECIFICATIONS

Power	30gpm @ 2,500 psi
Control Panel	Nema 4
Operating Pressure	1,850 psi
Ram Boost Pressure	2,100 psi
Ram Cycle Time—	2 to 4.5 minutes
Base Weight-lbs	36,000 to 42,000
14' Lid Load Volume	23 yds 3
6 Stage Ram Diameter	10.5"

DIMENSIONS

Load Height	13'6"
Hopper Width	14'
Length	48/51/53'
Maximum Width	102"



NEXGEN MUNICIPAL INC.

4430 Mainway Drive
Burlington, Ontario
Canada L7L 5Y5

Phone: (800)-567-0103
Fax: (905)-336-3035
www.nexgenmunicipal.com