

ISOLATOR

Features

- Stainless steel top plate construction
- Quick release top valve plate for easy maintenance of valve and catch basin structure
- Sealed valve stem with hexagon stem valve driver
- Valve opener is accessed from above the grate surface
- Valve opens in 6 quick turns
- Available valve sizes range from 6" to 12" depending upon the flow rate required
- Flexible designs to suit any application - round, square, rectangular or trench drain
- Canadian Patent 2127974
- US Patent 5569372

Drop-In Specifications

2" to 5" Top Plate
Buna Fuel Resistant Gasket
Stainless Steel Bottom Plate
Butterfly Valve with Buna Seat
90 Degree Stem Gear Actuator
Jet Fuel and Glycol Resistant Epoxy
Hex Head Shaft Adapter

Valve Flow Rates

6" Valve at 10" Depth:	1,112 USG
8" Valve at 10" Depth:	1,993 USG
10" Valve at 10" Depth:	3,264 USG
12" Valve at 10" Depth:	4,424 USG



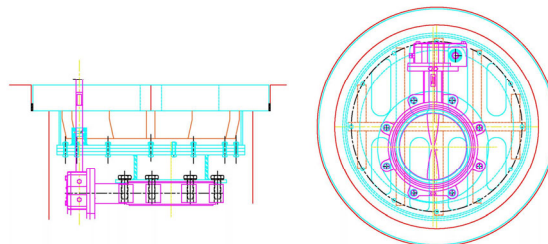
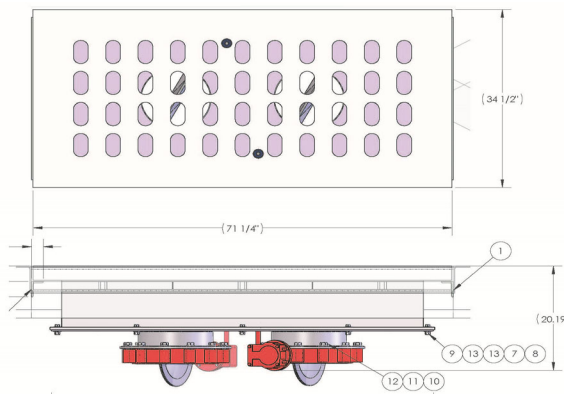
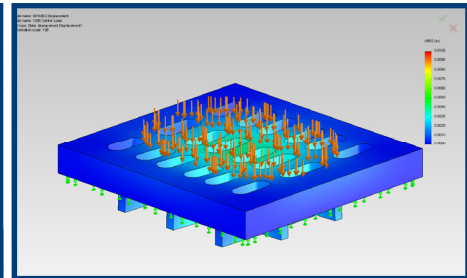
NEXGEN MUNICIPAL
turning vision into value™

NexGen ISOLATOR Drop-In CatchBasin Insert

SIMPLE, EFFECTIVE CONTAINMENT OF DE-ICING FLUID

NexGen's Catch Basin Inserts solve the problem of spent de-icing fluid containment. By controlling spent de-icing fluid at the surface, sub surface contamination is prevented and surface mobile collection is simplified and recovery rates are maximized.

Nexgen Drop-In Catch Basin Inserts are used when conditions under the catch basin frame are not liquid tight, typically when sectional frame risers are used. The Drop-In Basins are sealed to the frame using a glycol and fuel resistant mastic, most installations are completed in less than 1 hours making busy airside installation quick and simple. Stainless steel bottom plate and double valve stem seals ensure a long service life. Top plate loading is designed using FEA analysis to ensure compliance with FAA design requirements. Round, square and rectangular frame applications can be accommodated.



Units are designed to FAA load ratings using Solid Works.

Drop-in rectangular designs are available in 6" to 12" sizes, in single or dual configurations.

Nexgen Drop-In Catch Basin units are sealed to the existing frame using fuel and glycol resistant mastic.

Round Drop-In units are available in diameters to 48".

NEXGEN MUNICIPAL INC.

4430 Mainway Drive
Burlington, Ontario
Canada L7L 5Y5

Phone: (800)-567-0103
Fax: (905)-336-3035
www.nexgenmunicipal.com