

Phoenix



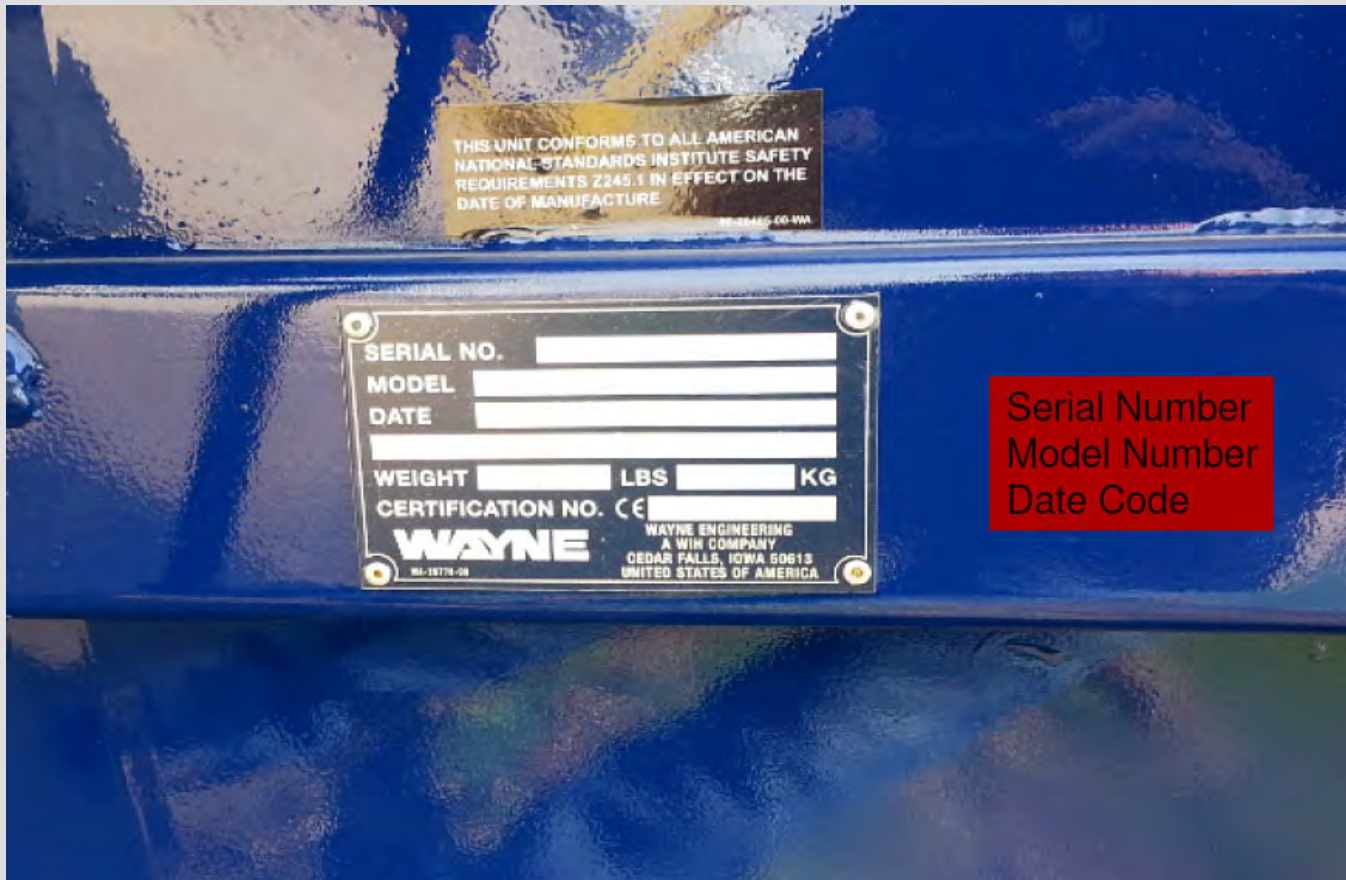
Phoenix



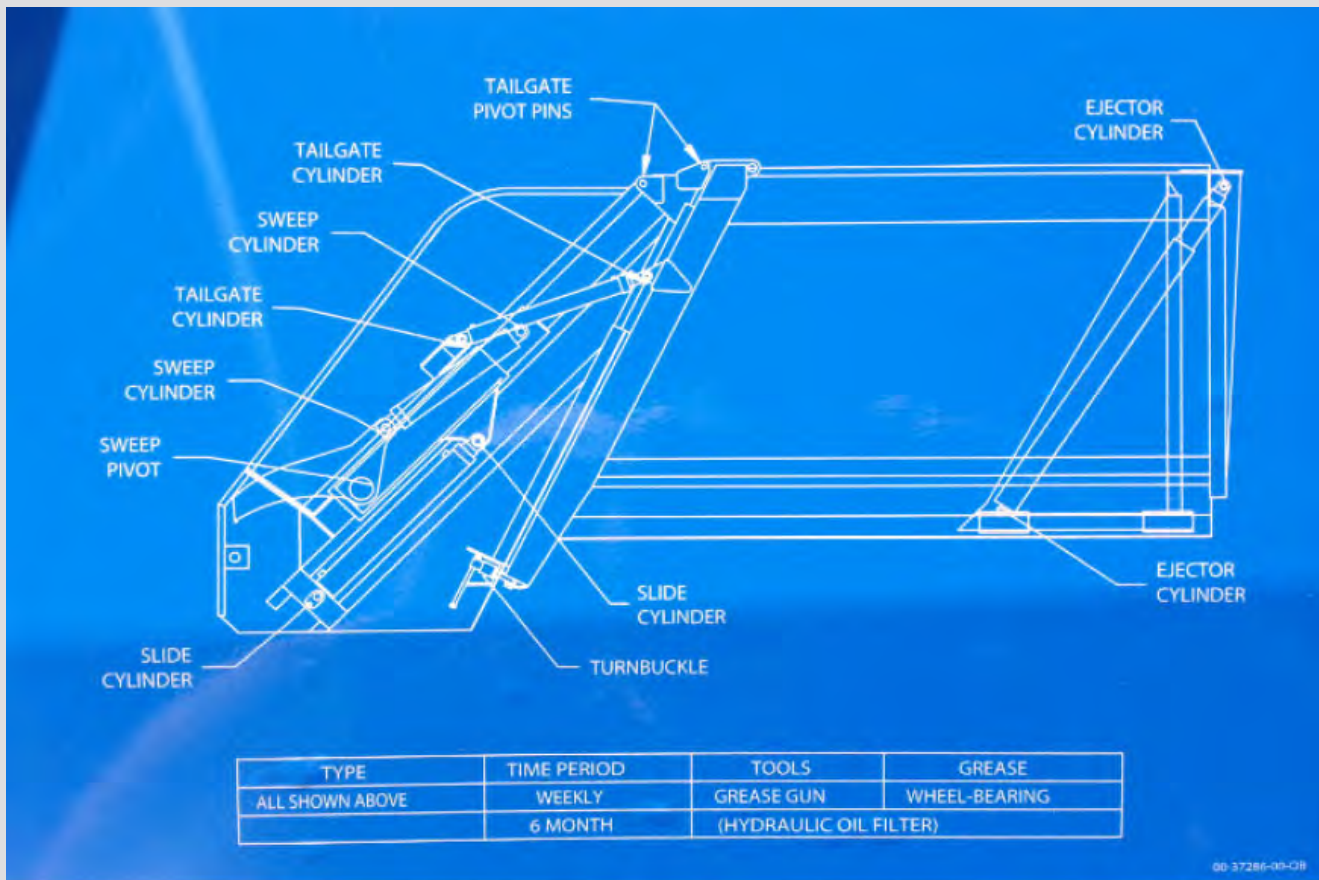
Misc Specs

- Oil Reservoir 50 gal
- Oil Flow w/Standard Pump 36 gpm
- Operating Pressure 2500 psi
- Return Filter 10 micron
- Pack Cycle Time 20-23 seconds
- 1000-plus lb./yd. Compaction Rating
- 3 cu./yd. Hopper
- Approx Body Weight 14,700 lbs

Serial Tag



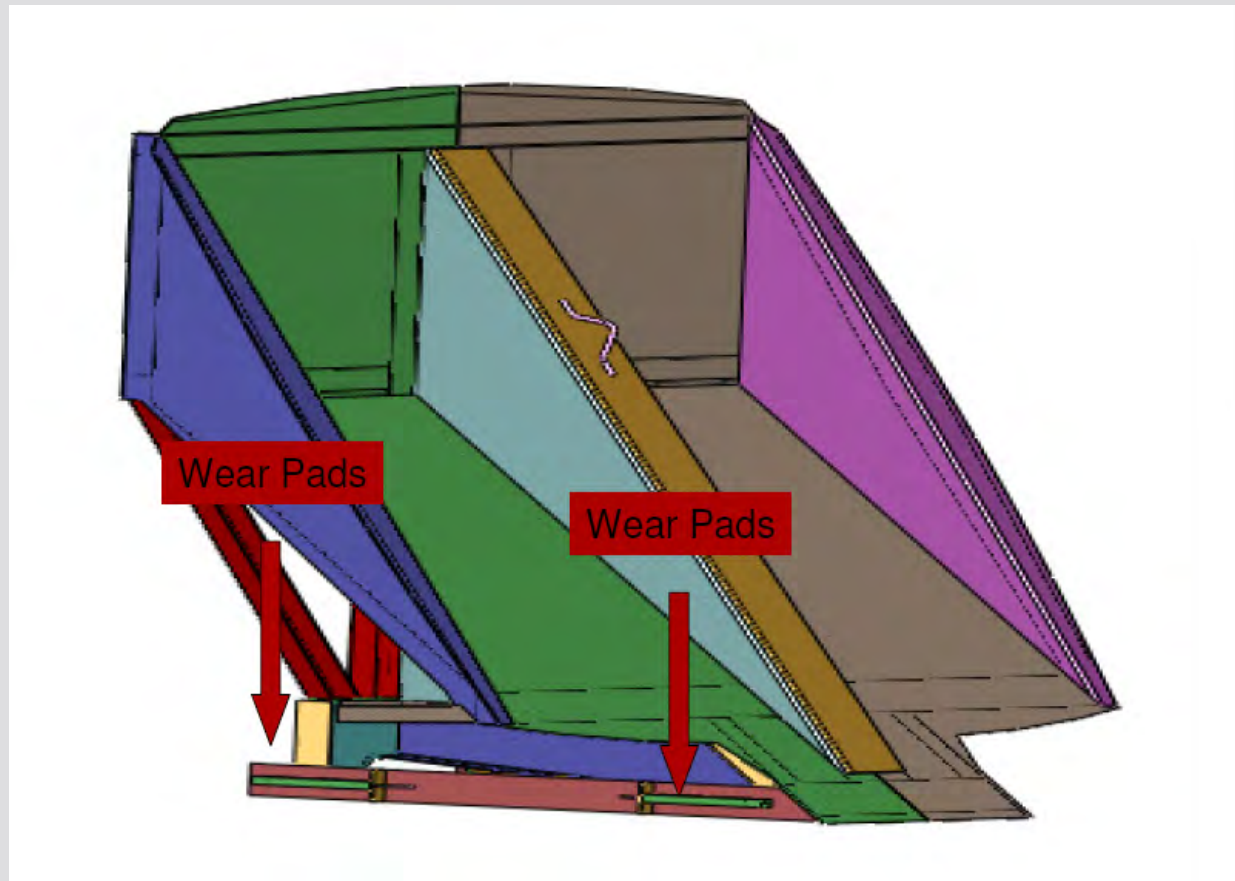
Lube Chart



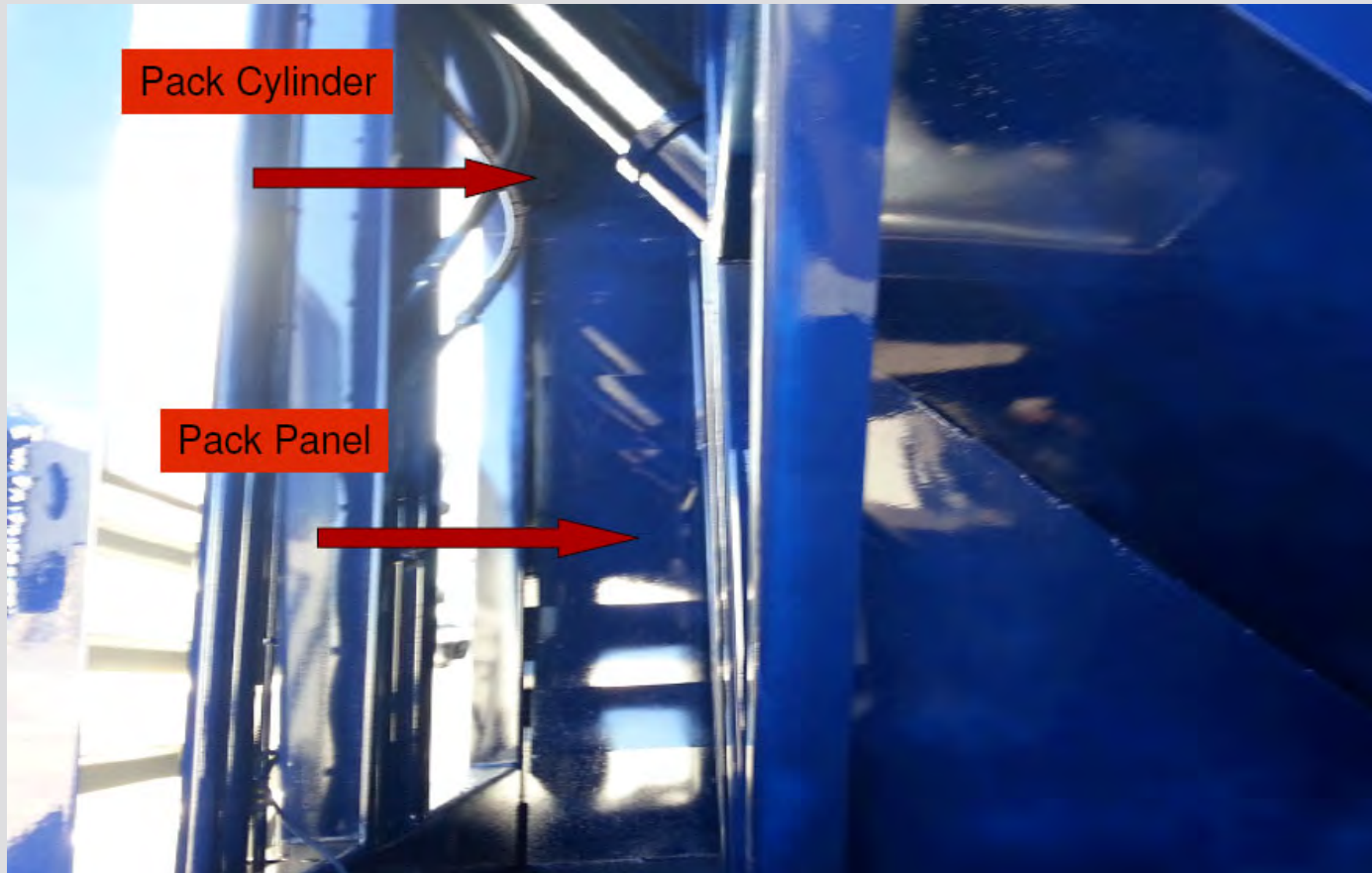
Eject Panel



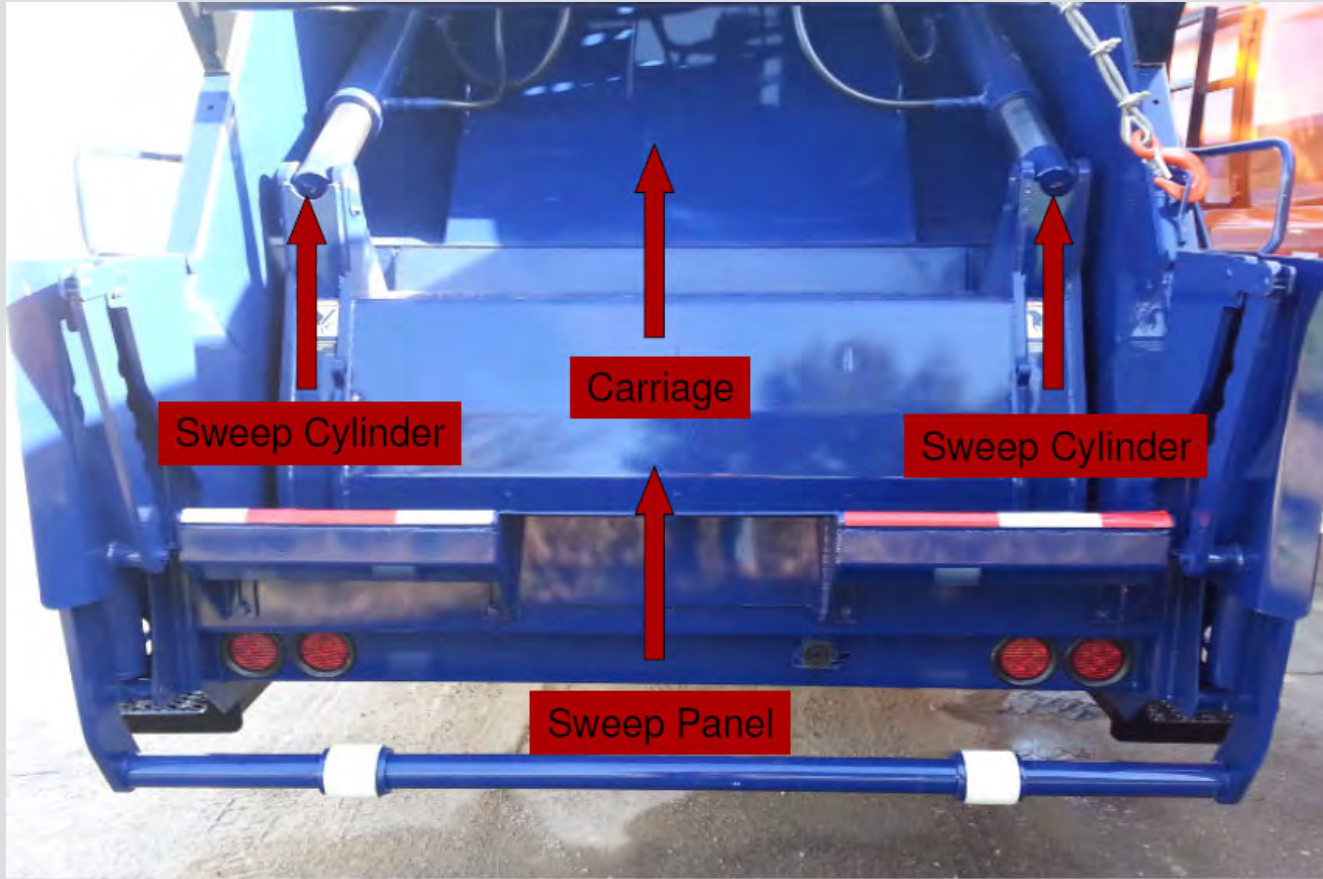
Eject Panel



Eject Cylinder



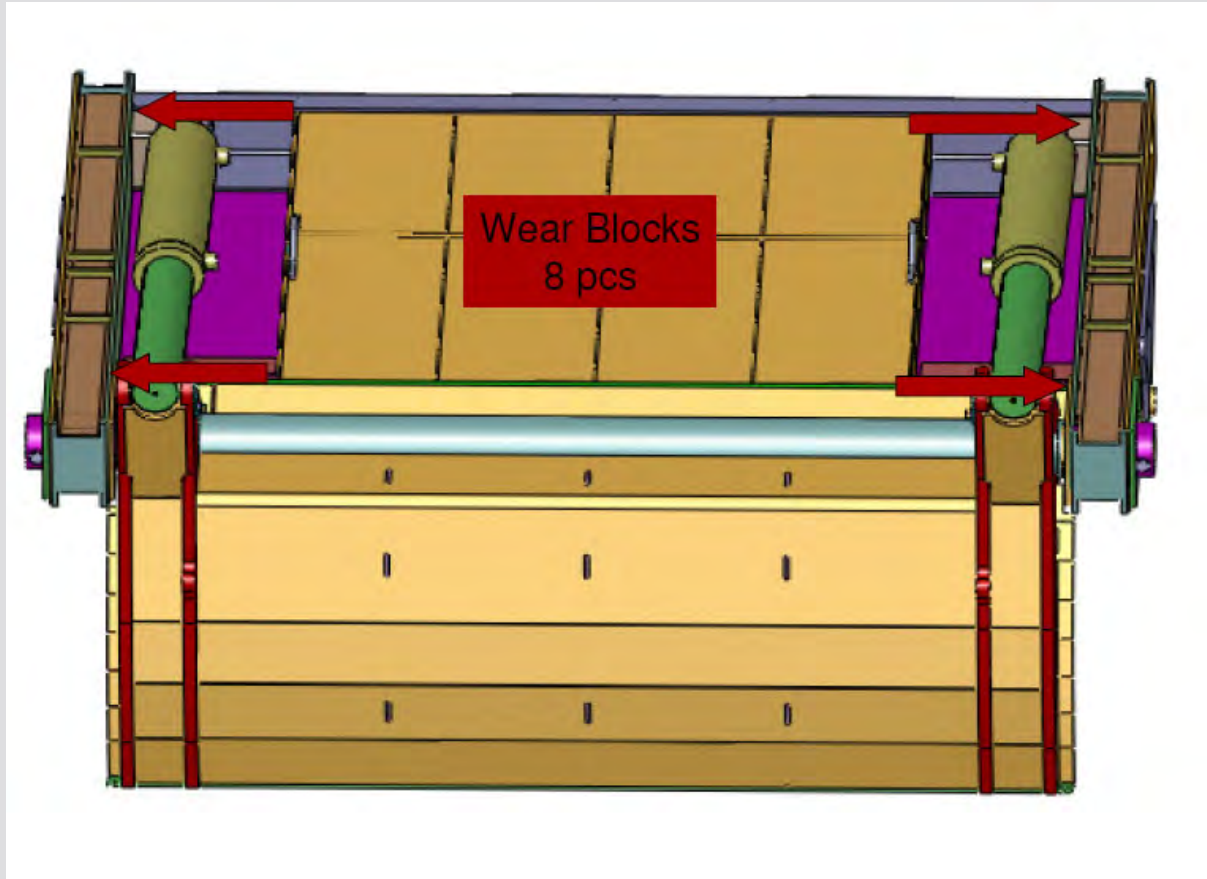
Pack/Eject Panels



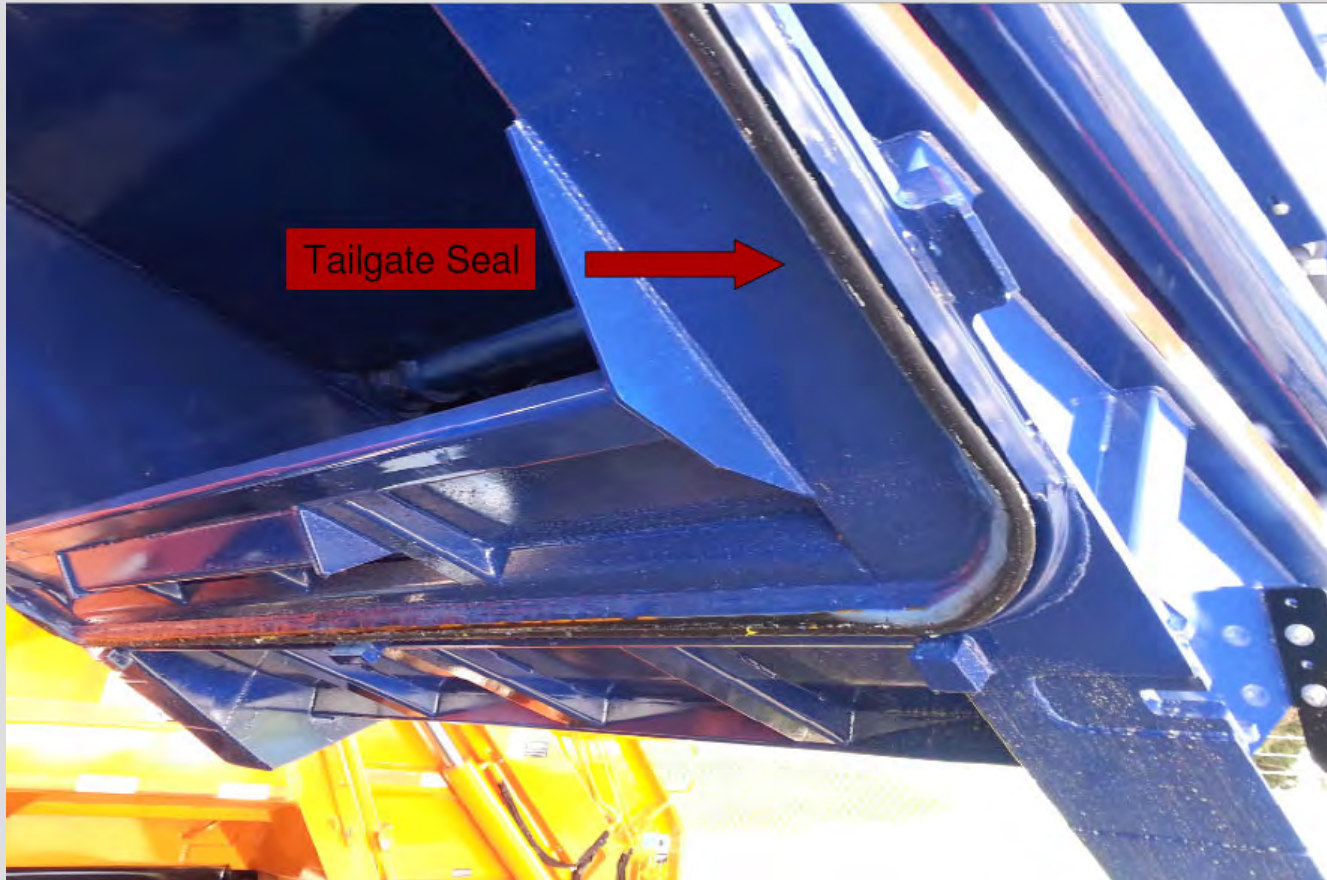
Pack Cylinder



Wear Blocks



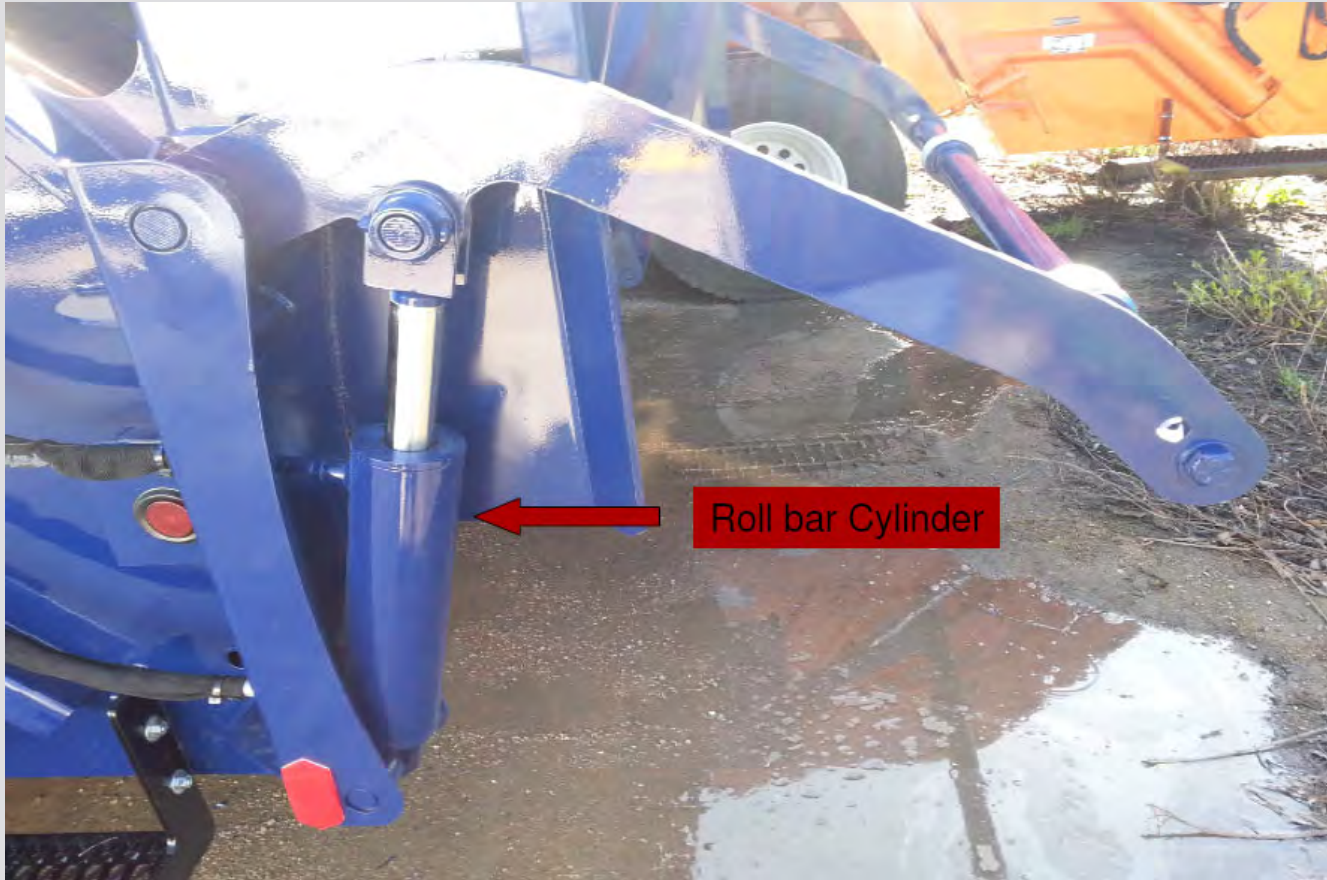
Tailgate Seal



Tailgate Prop Rod



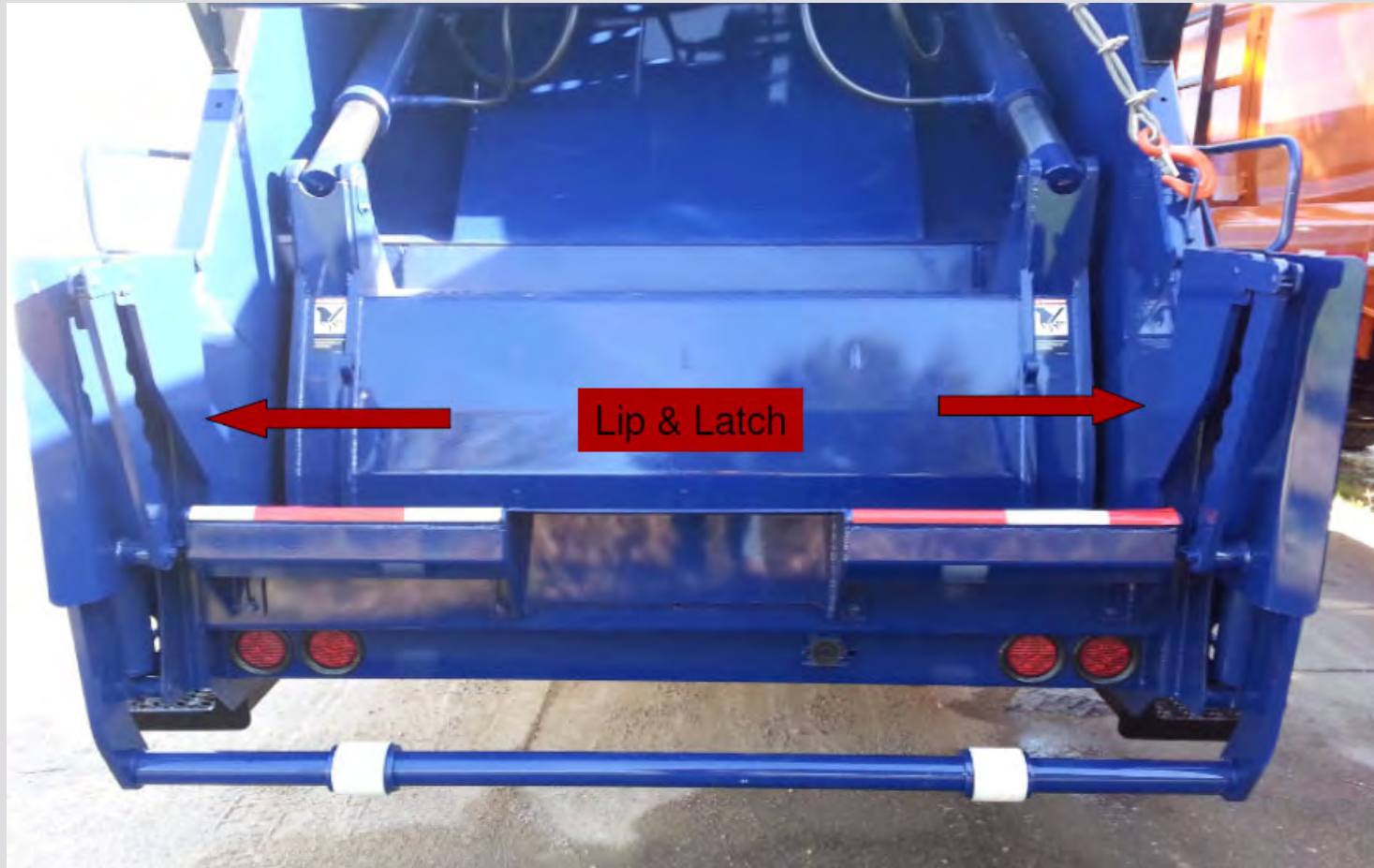
Roll Bar



Roll Bar



Lip & Latch



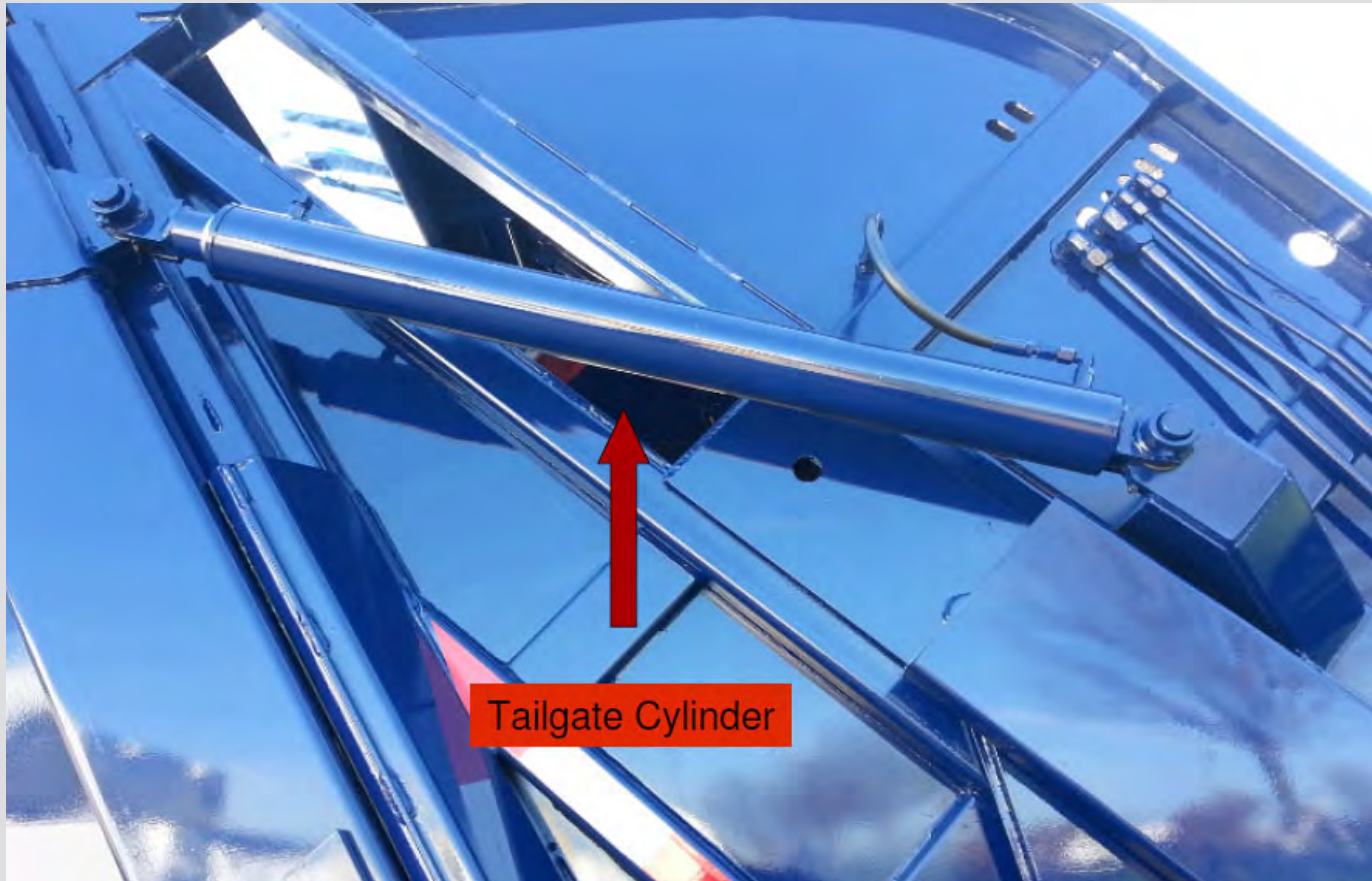
Lip & Latch



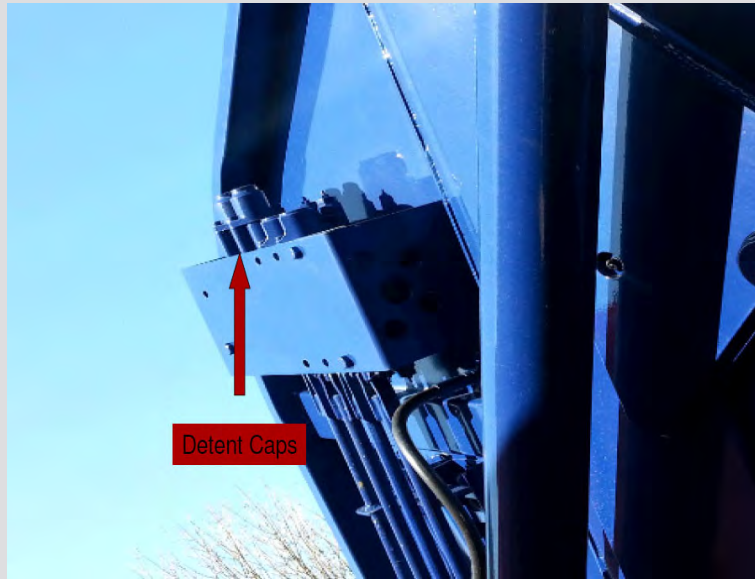
Winch



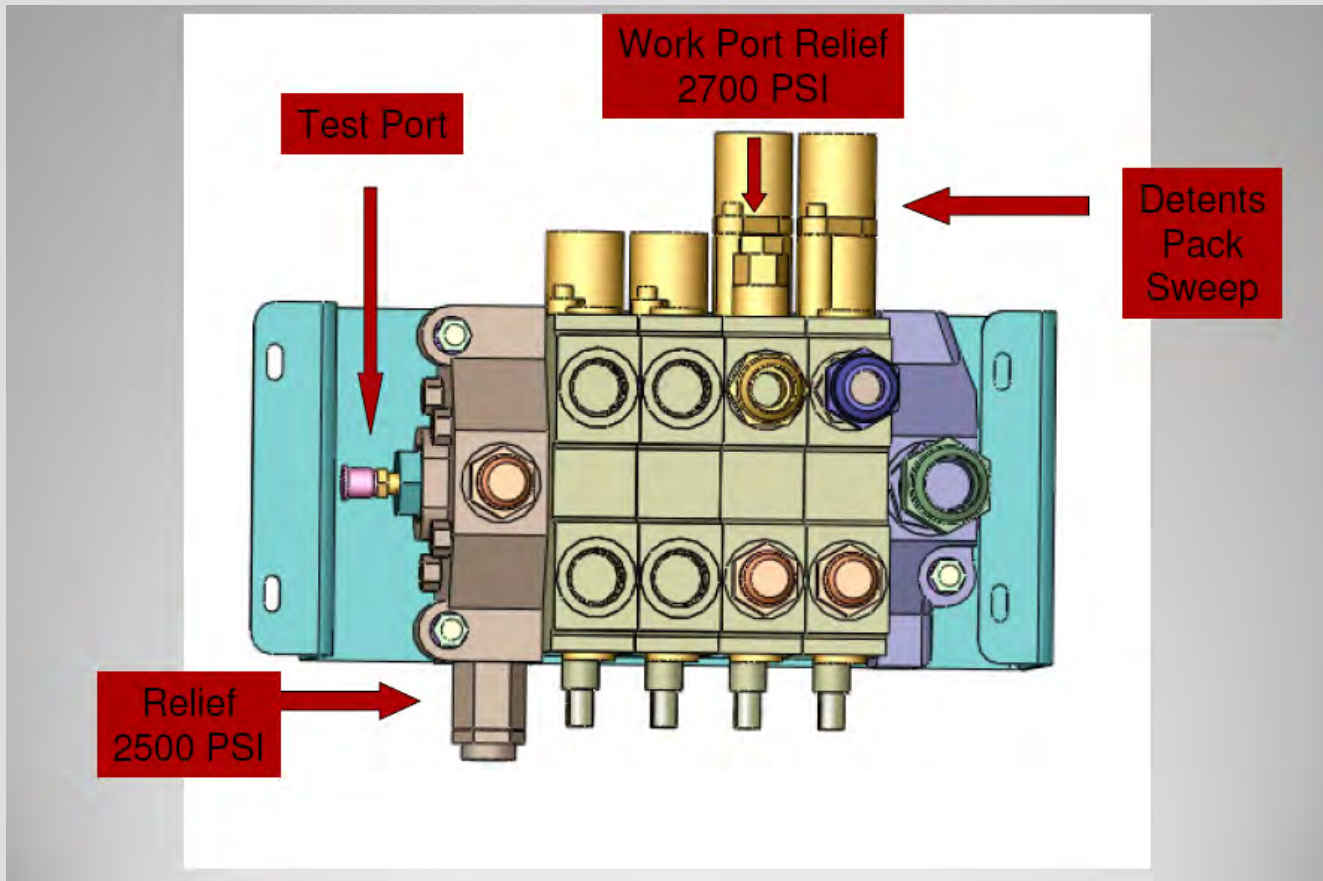
Tailgate Cylinder



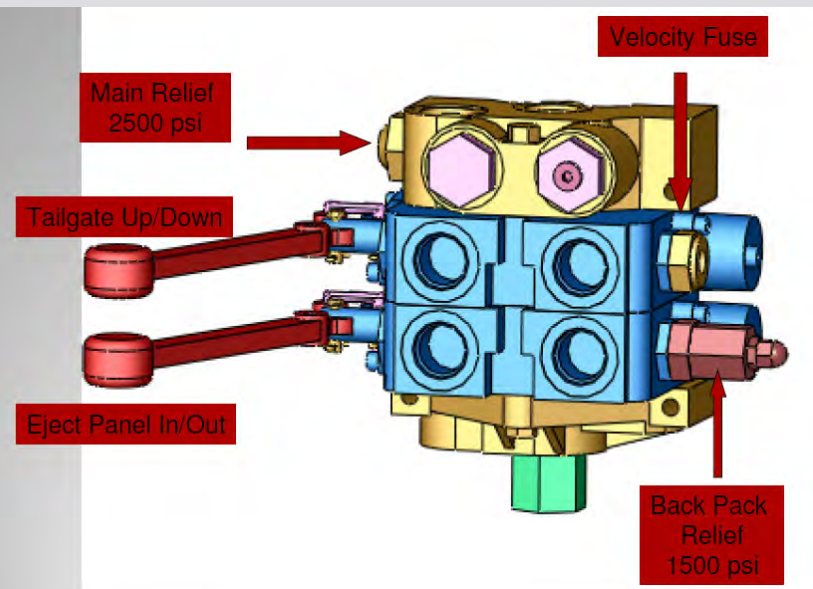
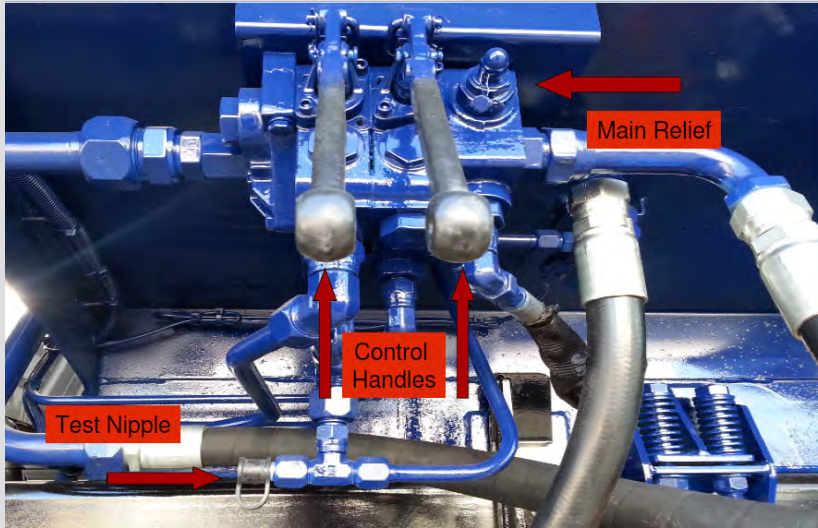
Tailgate Valve



Tailgate Valve



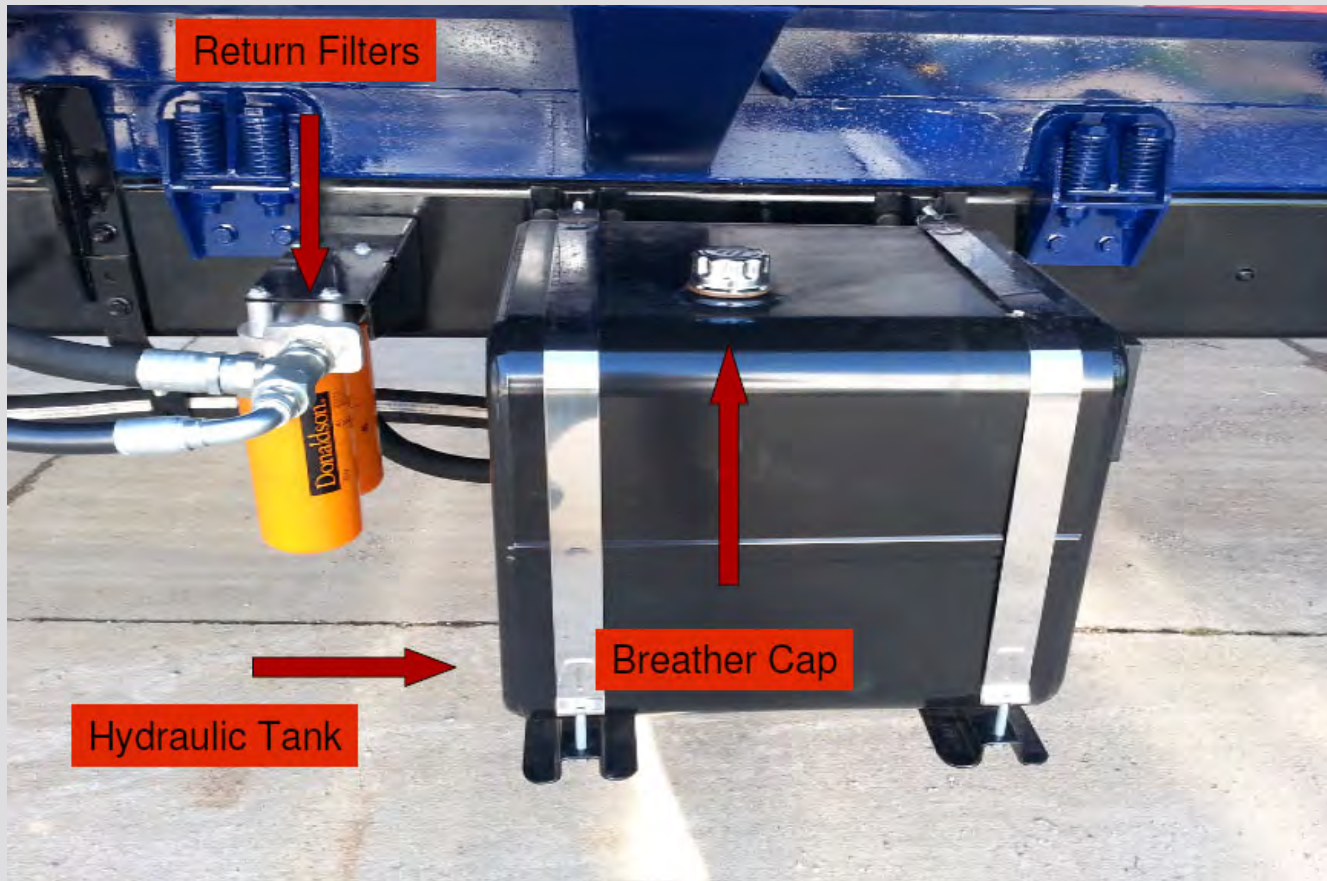
Body Valve



Return Filters



Hydraulic Tank



Filter Service

2) CHECK/REPLACE RETURN FILTER

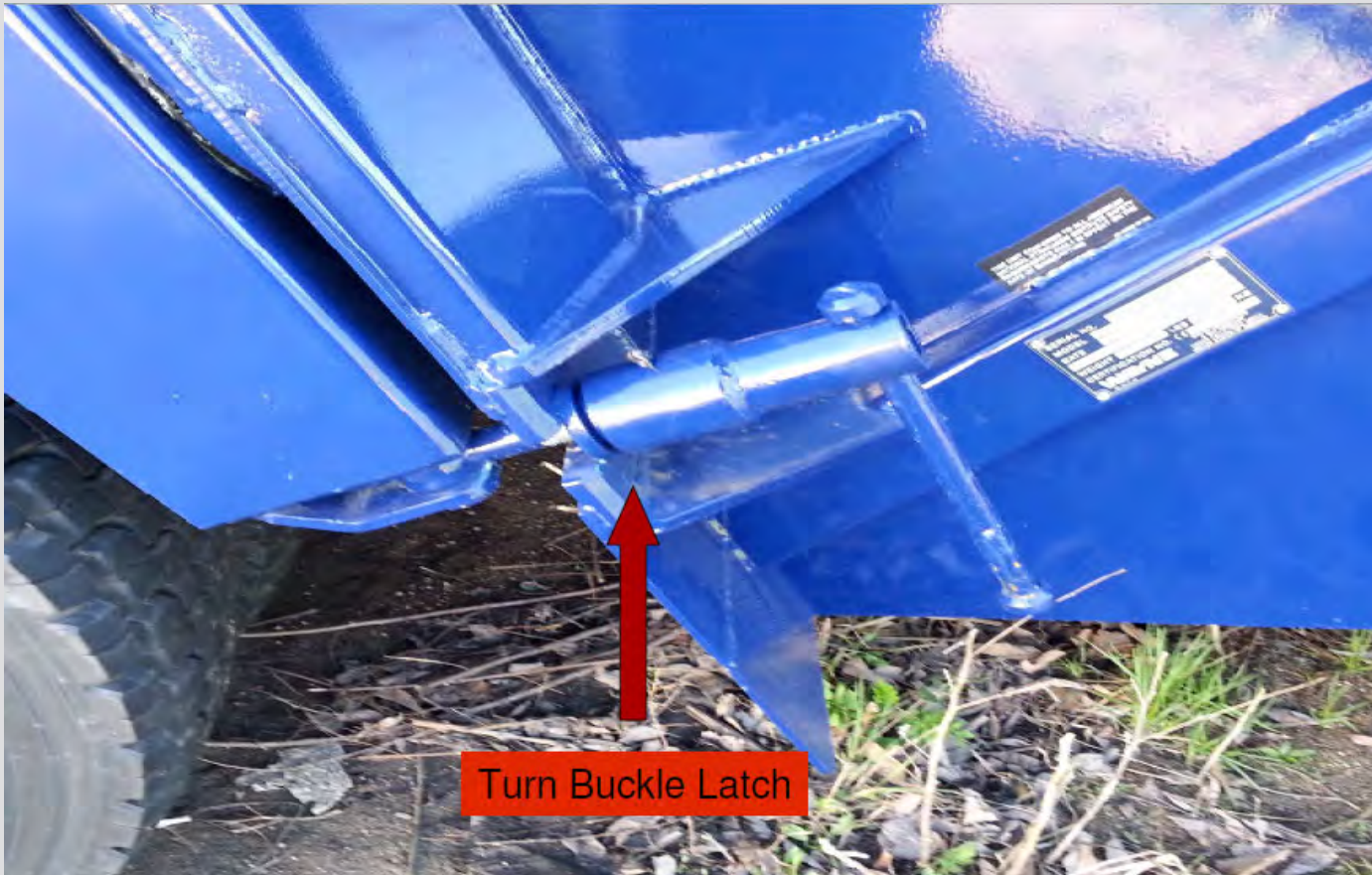
The return filter is a vital component of the hydraulic system. Without proper filtration, problems with hydraulic system components will occur. Stick to a strict maintenance schedule for this item.

Time Lapse Recommendations for Filter Replacement:

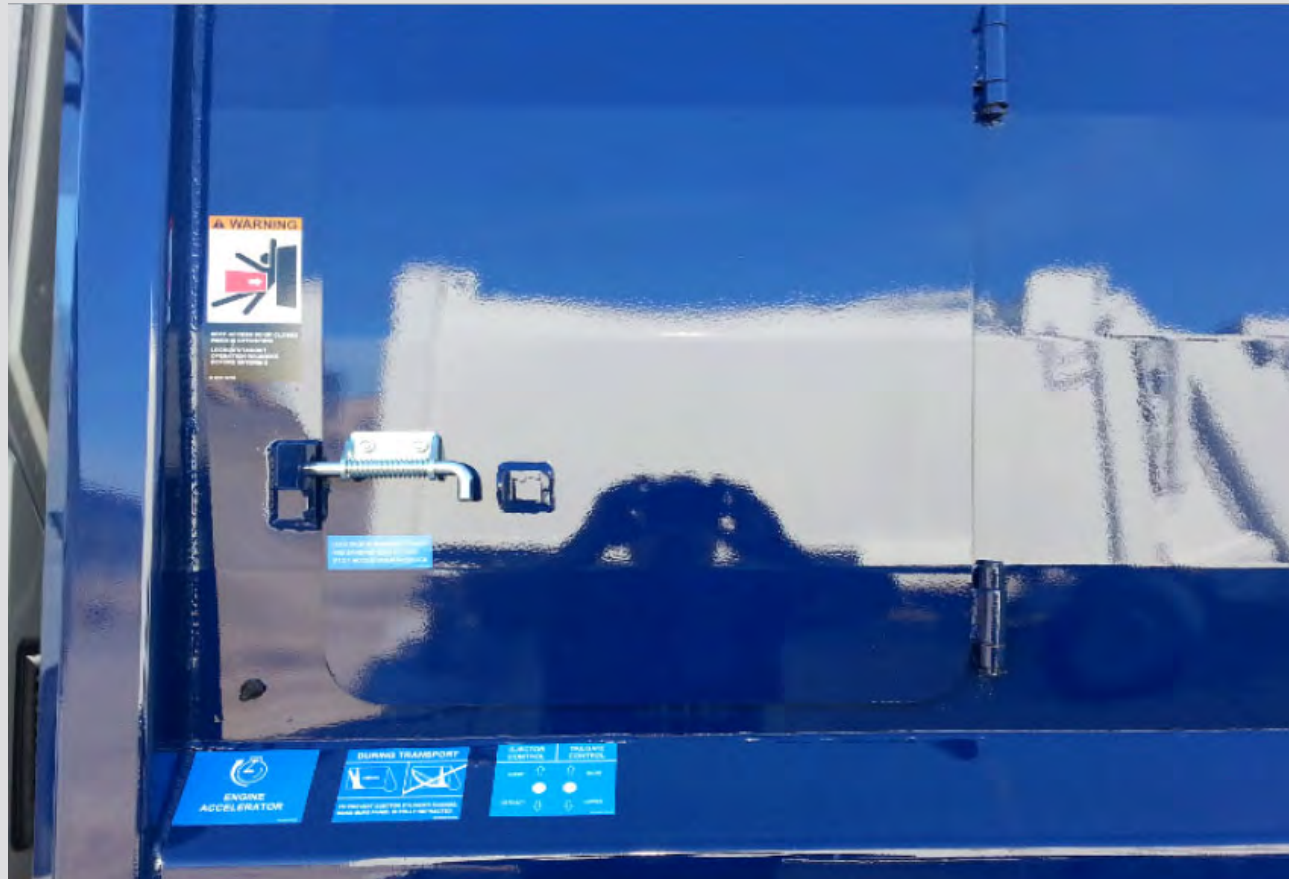
- a) After the first 20-hours of hydraulic pump operation.
- b) After the next 50-hours of hydraulic pump operation.
- c) Thereafter, every 250-hours of hydraulic pump operation or sooner, if so indicated by adverse operating conditions.

The condition of the filter must be checked weekly.

Tailgate Lock



Access Door



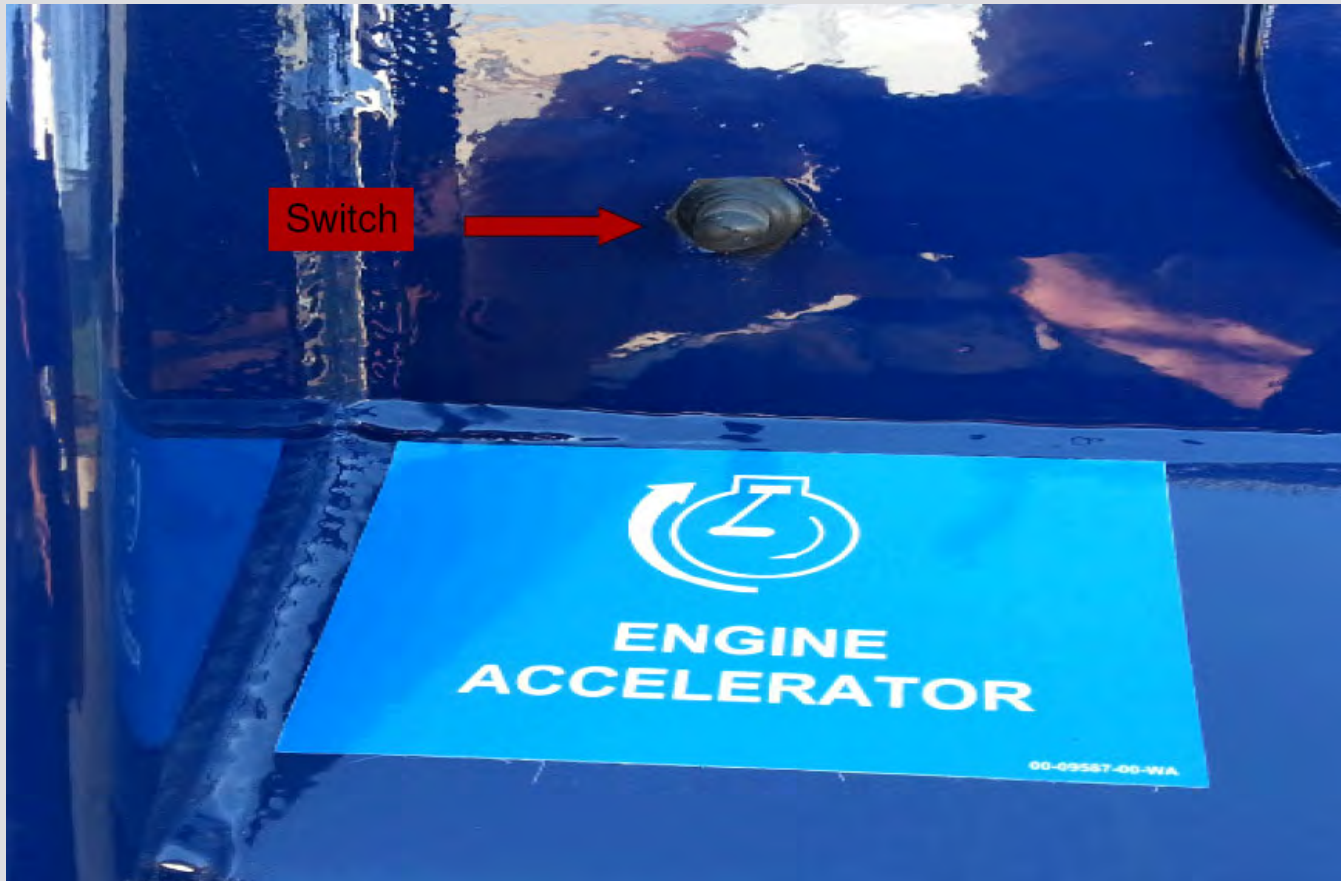
Tailgate Handles



Tailgate Step



Engine Accelerator Switch

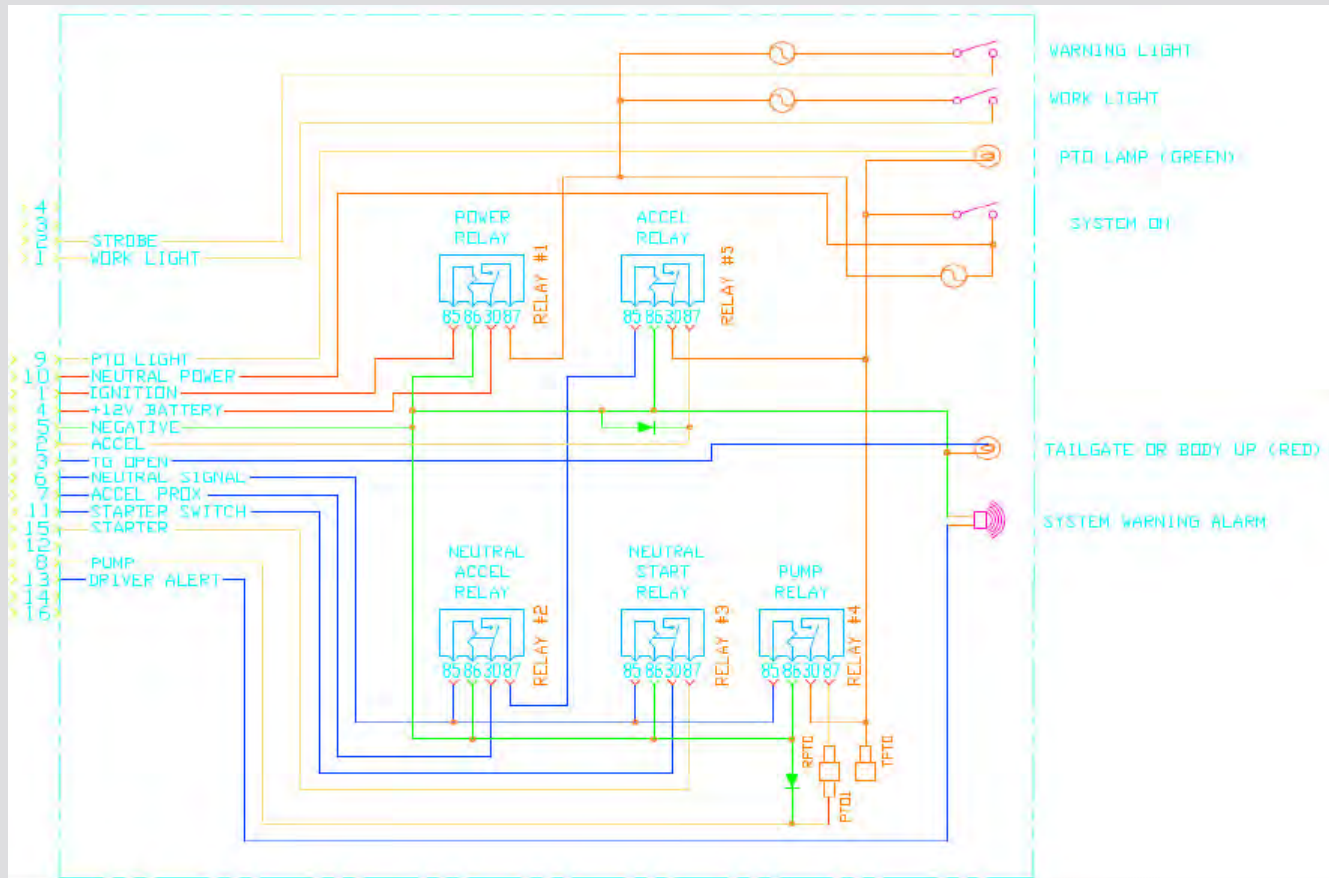


Control Panel

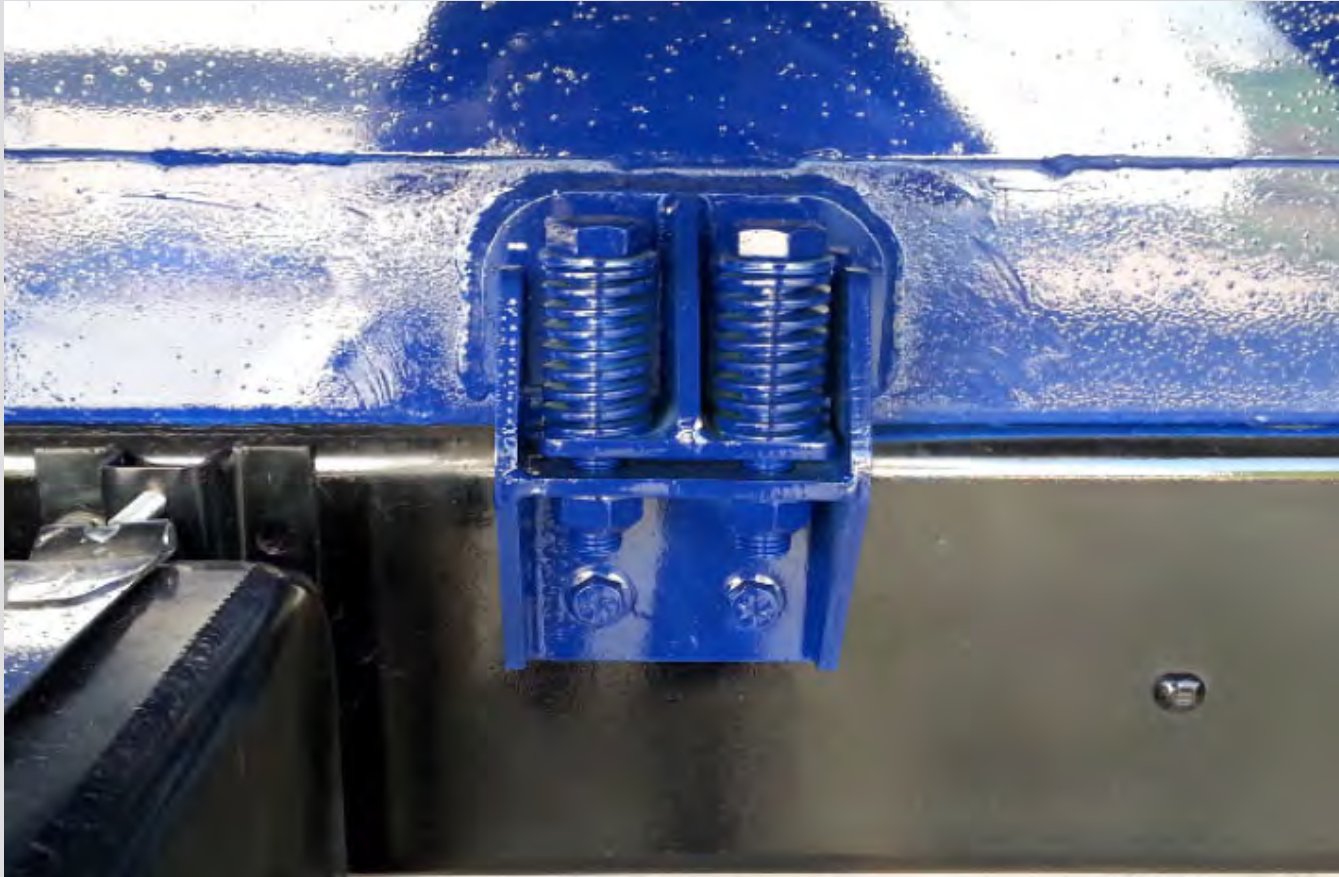


Switch with light	345-011-010
Lights Red	332-036-003
Lights Green	332-036-004
Relay	342-013-017

Control Panel Wire Schematic



Body Hold Down



Body Hold Down

